

# Technical data sheet

## Wireless accessories

ConnectClip is an intermediate device, which wirelessly connects Oticon 2.4GHz wireless hearing aids through Bluetooth to most mobile phones.

ConnectClip further doubles as a remote/partner microphone for improved 1-to-1 speech understanding in adverse listening situations.

### **Headset for mobile phones**

ConnectClip can be paired with most mobile phones through Bluetooth, in effect turning the hearing instruments into a high-quality headset. Sound from the mobile phone is streamed wirelessly directly to the hearing aids, while the ConnectClip's directional microphones pick up the wearer's voice.

### **Headphones for music (A2DP)**

Audio/music from a Bluetooth-connected mobile phone, MP3 player, etc. is streamed directly in stereo to both hearing aids.

### **Remote/Partner microphone**

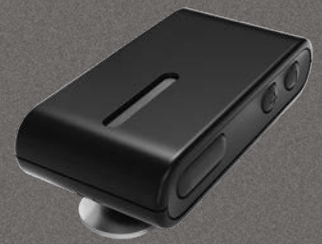
The ConnectClip works in a special mode as a remote/partner microphone for improved intelligibility of the speaker wearing it, either at a distance from the listener (up to 65 feet), in a very noisy environment, or in a combination of the two.

### **PC/Laptop/Computer**

It can at times be difficult to pair/connect directly to a computer's built-in Bluetooth. To overcome any issues, ConnectClip can be used with the BT800 USB dongle for easy/hassle-free connectivity.

For more information please visit: [www.oticon.com](http://www.oticon.com)

## ConnectClip

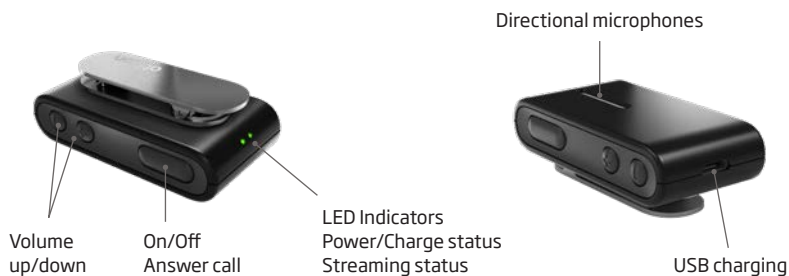


The ConnectClip is a multipurpose device which empowers today's Oticon hearing aid users to participate and interact in a number of everyday situations which are at best difficult and at worst impossible, even with the best hearing instruments.




## Included

- Instructions for use
- Regular and long lanyard
- Power adapter for charging
- USB charge cable
- Protective pouch
- Protective skin



Technical data	
Name/model	ConnectClip/AC1A
FCC/IC	FCC ID: 2ACAHAC01 IC: 11936A-AC01
Compatibility	Oticon 2.4GHz wireless hearing instruments
Dimensions	53 x 27 x 18 mm; weight 27 g
Conditions of use	<p>Transportation and storage conditions:            Temperature and humidity shall not exceed the below limits for extended periods during transportation and storage:</p> <ul style="list-style-type: none"> <li>• Temperature: -20°C to +60°C/-4°F to 140°F</li> <li>• Humidity: 15 - 93%, noncondensing</li> </ul> <p>Operational environment conditions:</p> <ul style="list-style-type: none"> <li>• Temperature: +5°C to 40°C/41°F to 104°F</li> <li>• Humidity: 15 - 93%, noncondensing</li> <li>• Atmospheric pressure: 700 hPa to 1060 hPa</li> </ul>
System features	Mobile phone headset (handsfree/headset profile) & Stereo Music (A2DP) Remote/Partner Microphone
Remote control of HI	Volume, program shift and mute of microphones in hearing instruments
Battery <sup>1</sup>	<p>Typical daily use 16 hours:            2 hours audio streaming + 2 hours phone + 12 hours standby.            36 hours standby (turned on, no streaming)            Charge time 2 hours            Battery total life expectancy: 80% capacity left after 720 charge/re-charge cycles</p>
Audio quality <sup>2</sup>	Stereo/20 kHz sample freq.
Audio bandwidth <sup>2</sup>	80 Hz - 10 kHz
Pairing details	Up to 8 paired Bluetooth devices
Bluetooth compliance	Version 4.2 + EDR
Bluetooth profile support	Advanced Audio Distribution Profile (A2DP) 1.3 Headset Profile (HSP) 1.2 Hands-Free Profile (HFP) 1.6 including support for Wideband Speech
Wireless range <sup>3</sup>	up to 33 feet with Bluetooth Class 2 devices (e.g. mobile phones); up to 65 feet between ConnectClip and hearing instruments
Streaming frequency	2.4GHz (Bluetooth band)
Emissions	Max. 17 dBm e.i.r.p. in compliance with all relevant standards
Status indications	LEDs on the ConnectClip. Acoustic signals in hearing instruments
Genie 2017.2 (or later)	Firmware upgrade. Fitting of streaming programs

1. Using the supplied charger
2. Actual audio performance depending on client's hearing instruments
3. Free line of sight between the ConnectClip and other devices. Other devices operating in the 2.4GHz band may interfere and reduce range.

 SBO Hearing A/S  
Kongebakken 9  
DK-2765 Smørum  
Denmark

 Waste from electronic equipment must be handled according to local regulations.

