

**The Hearing Screening System  
Designed for Adult Patients**  
*using Otoacoustic Emissions*

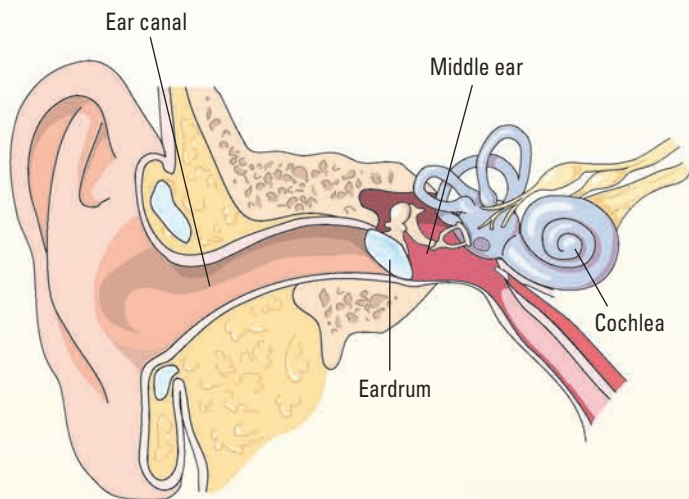
**Large Color  
Display**



***The American Speech-Language-Hearing Association recommends that adults be screened for hearing impairment at least every decade through age 50 and at 3-year intervals thereafter.***

# The World's Leading Portable OAE Screener...

## AUDX<sup>®</sup> PRO



*AuDX delivers sounds into the ear canal & measures the OAE response produced by outer hair cells in the cochlea.*

An otoacoustic emission (OAE) is a response generated by structures (outer hair cells) in the healthy cochlea to sounds presented into the ear canal. AuDX presents a soft pair of tones (distortion product OAE) through a probe placed in the patient's ear canal. A tiny, sensitive microphone in the probe measures the OAE. AuDX automatically compares the response to normative data and assigns a "pass" or "refer" result to the screening. OAE screening can be used for patients of all ages, newborns through geriatrics. Insertion of the ear probe is the only patient preparation required.

### *Why professionals choose AuDX<sup>®</sup>:*

- Large color display – enhanced operation & data viewing
- Fast, accurate results – as fast as 10 seconds per ear
- Adult Screening Protocol – avoids over-referral issues associated with pediatric protocols
- Objective test – no patient response required
- Pass/Refer result provided – no interpretation required
- Label printer – results documented in seconds
- Operates on rechargeable lithium battery or AC Power – no downtime during recharge
- Over 27 years of experience with hearing screening and diagnostic product design and manufacturing
- 24/7 Technical Support



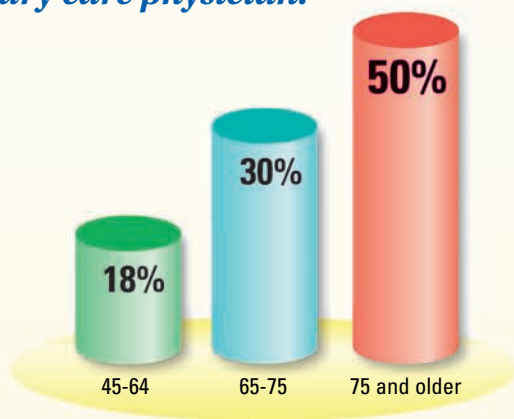
*With minimal training, any staff member can perform the AuDX OAE test. Add this test to the collection of vital sign information to provide your patients with a thorough physical exam.*



# ...for Providers of World Class Care

## Hearing loss ranks 3rd on the list of chronic health conditions of adults<sup>1</sup>

Despite the prevalence of hearing loss in adults, it is often undetected by the primary care physician.



Prevalence of Hearing Loss by Age<sup>2,3</sup>

**75% of individuals who could benefit from a hearing aid don't use one. In fact, most have never been evaluated for hearing loss.<sup>5</sup>**

Failure to detect and treat a patient for hearing loss can seriously affect a person's quality of life. Untreated adult hearing impairment has been correlated with social and emotional isolation, clinical depression and limited activity.<sup>6</sup> The risk of dementia in older adults increases as a function of increasing hearing loss.<sup>7</sup>

Effective treatment for sensorineural hearing loss is available in the form of hearing aids.

### Why does hearing loss go undetected?

- When questioned about hearing acuity, many people with significant hearing loss will deny problems.
- Common hearing screening methods such as the 'finger rub' or 'whispered voice' tests are subjective and unreliable.<sup>4</sup>
- The effects of hearing loss on communication may not be apparent in a quiet exam room.



**AuDX Pro, with the addition of the unique adult protocol, allows you to screen your adult patients' hearing quickly & objectively.**



1. Adams P, Benson V. (1991) Current estimates from the National Health Interview Survey. National Center for Health Statistics. Vital Health Statistics. 10:184.

2. Kochkin S. Hearing loss – the prevalence of hearing loss. [www.betterhearing.org](http://www.betterhearing.org).

3. Healthy People 2010: Volume II (second edition). [www.healthypeople.gov](http://www.healthypeople.gov).

4. Yueh B, Shapiro N, MacLean CH, Shekelle PG. (2003) Screening and management of adult hearing loss in primary care: scientific review. JAMA. 289: 1976-1985.

5. Kochkin S. (1993) MarkeTrak III: Why 20 million in US don't use hearing aids for their hearing loss. Hearing Journal. 46:20-27.

6. Valla AF, Sweetow RW. (2000) Psychology of individuals with hearing impairment. In: Sandlin RE, editor. Hearing Aid Amplification. San Diego, CA: Singular Publishing Group. 557-570.

7. Uhlmann R, Larson E, Rees T, Koepsell T, Duckert L. (1989) Relationship of hearing impairment to dementia and cognitive dysfunction in older adults. JAMA. 261:1916-1919.

# Consumables — 1-800-303-0306



Premie TreeTip®

TreeTip®\*

Pediatric Tip

Pediatric Foam Tip

Adult Foam Tip

Jumbo Foam Tip



## Probe Tips

- Foam tip offers a better fit for varying shapes & sizes of ear canals



## Printer Labels

- 220 self-adhesive labels/roll
- Results from both ears on one label

\* U.S. Patent No. 6,258,043

## Is an OAE Test Reimbursable?

Yes, the CPT code for an OAE screening is 92587 (evoked otoacoustic emission, limited). According to the American Speech-Language-Hearing Association (2005), the national average for reimbursement for this CPT code is \$61.00.

Based on this reimbursement level, and assuming a modest usage rate of 10 screenings per week, the cost of an AuDX unit with the adult protocol will be recouped in less than 9 weeks.

## Your Local Bio-logic Representative:

Contact us for information on our complete line of Hearing Screening & Diagnostic Products

Natus Medical Incorporated  
1501 Industrial Road  
San Carlos, CA 94070  
Ph: ((847) 949-5200  
Fax: (847) 949-8615

Global Sales & Support  
1-800-303-0306

[www.natus.com](http://www.natus.com)



**Special Olympics**  
Natus Medical Incorporated is an  
Official Healthy Hearing Sponsor  
of Special Olympics.

**natus**  
hearing diagnostics